

A E N C

CREATING THE FUTURE

Beauty





# What is AI ProDryer?

**The World's first AI hair dryer by AENO** is a revolutionary styling tool trained with artificial intelligence based on real user behavior, it's engineered with **9 patented technologies** to deliver **salon-quality results at home** - effortlessly, at home, **with no pro skills** required.







# AI ProDryer (HD5)

●	<b>Model</b>	<b>EAN</b>	●	<b>Model</b>	<b>EAN</b>	●	<b>Model</b>	<b>EAN</b>
	AHD0005W	5291485013653		AHD0005G	5291485013677		AHD0005B	5291485013691

- Patented AI auto start-stop technology
- Patented AI auto temperature control
- Patented AI auto overheating protection
- Patented Voice control: AI, Soft, Hot, Cold
- Touch screen for speed & temperature control
- Hair ionization: reduce frizz, enhance shine
- 5 magnetic nozzles for all hairstyles
- Healthier, shinier hair: Patented InfraCare technology
- Fast drying: powerful airflow
- Heat-free environment technology
- Highly customizable: 14 temperature & speed settings
- Safe for hair: intelligent thermo-control NTC sensor
- Prevents hand fatigue: light weight 600g
- Durable & Powerful: professional brushless motor
- Quiet: Noise-optimized engine
- Travel friendly: travel case included
- Energy saving: AI Gravity technology & energy-efficient motor
- Long cord 2 m

Patented AI auto start-stop technology	Patented AI auto temperature control	Patented AI auto overheating protection	Patented Voice Control
--	--------------------------------------	---	------------------------

# AI ProDryer product details





# AI ProDryer 5 magnetic nozzles for all hairstyles

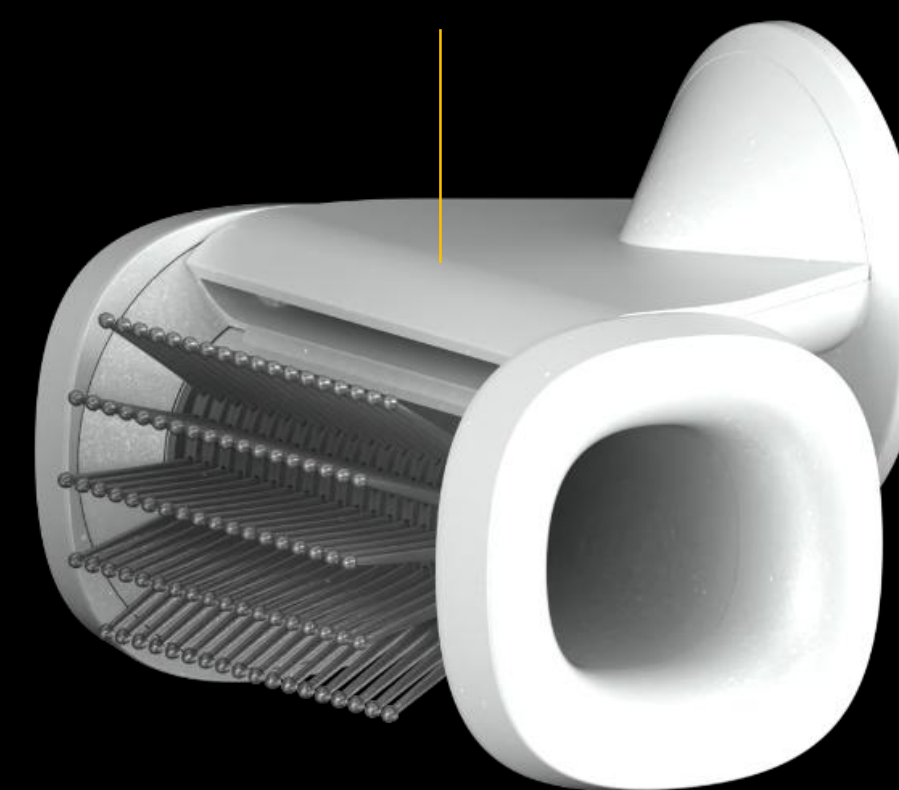
## Quick dry nozzle

Designed to dry hair quickly and evenly.



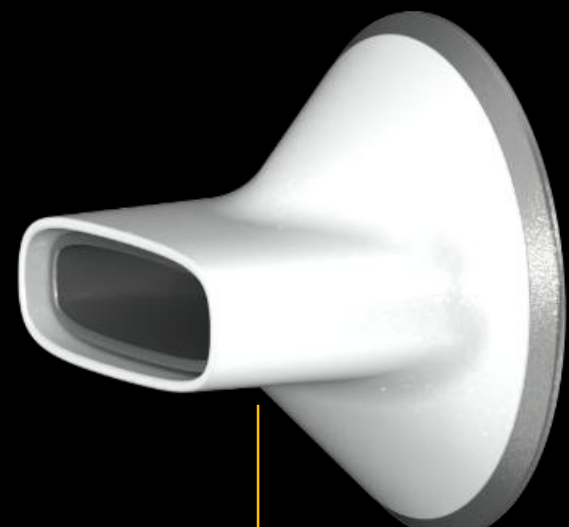
## Brush attachment

Designed to make hair smoother.



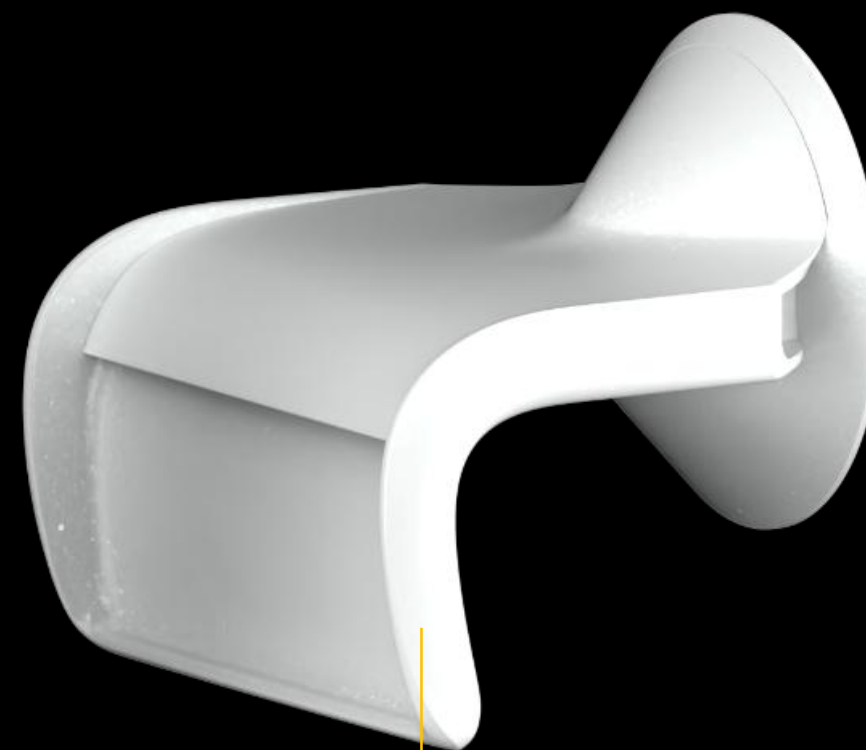
## Styling nozzle

Designed to straighten hair and create complex hairstyles.



## Coanda effect attachment

Designed to straighten unruly hair.



## Diffuser attachment

Designed for styling curly and wavy hair.





# AI ProDryer Premium travel case included

The waterproof case can hold a hairdryer and 5 nozzles.



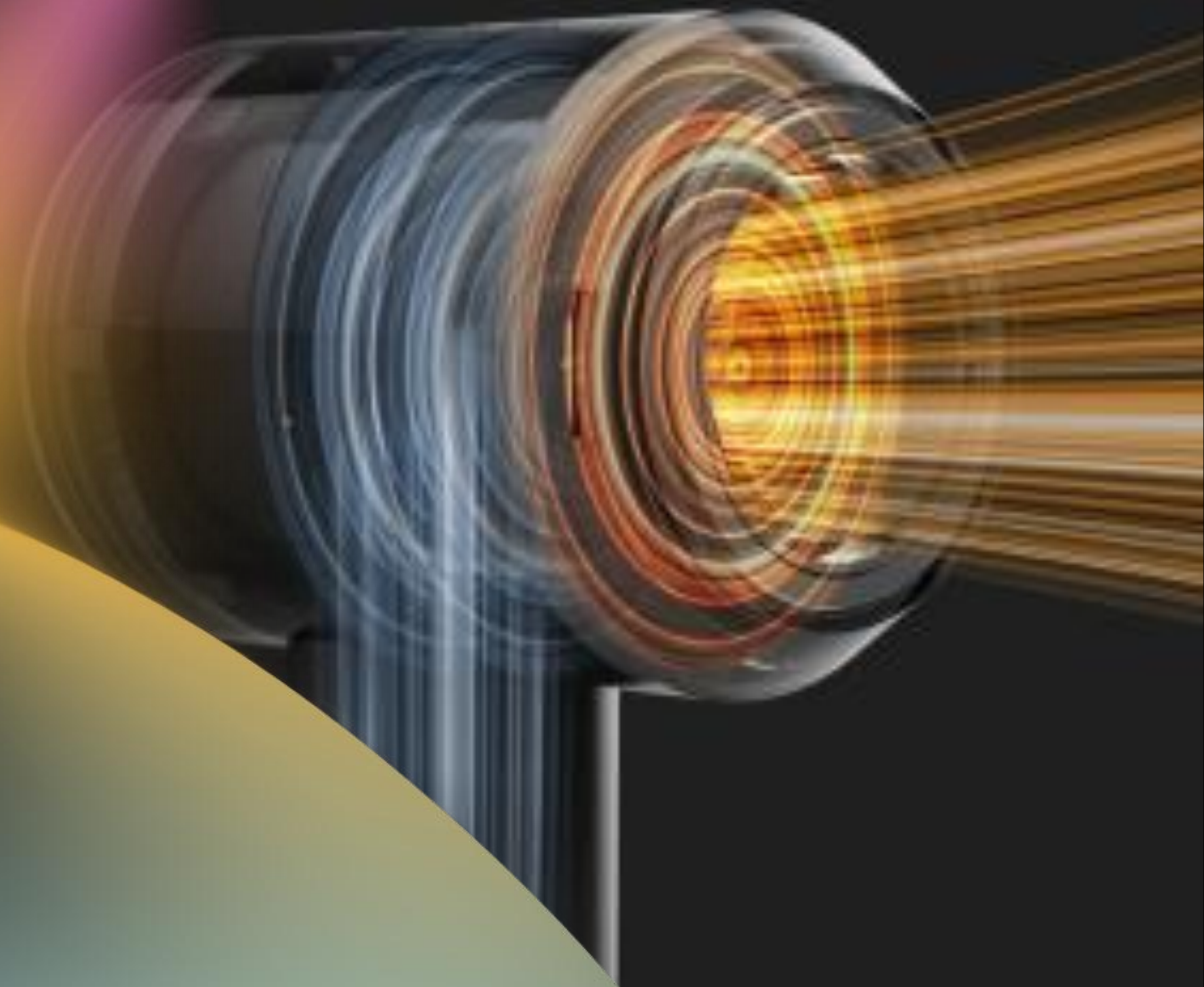


# Hair Dryer

## **AENO HD1**

Engineered for fast, efficient styling with a powerful airflow of 100 km/h to ensure quick drying times without compromising hair health. Equipped with an intelligent thermo-control NTC sensor, it provides safe, precise heat management to protect your hair. Experience less frizz and more shine thanks to its advanced ionic technology, leaving your hair smooth and lustrous. Effortlessly switch styles with quick-change 360° magnetic nozzles, designed for convenience and versatility. Weighing just 550g, it's your go-to for lightweight handling.

Tailor your drying experience with 9 customizable scenarios, including 3 heating modes and 3 speeds for each mode, making it suitable for all hair types. Maintenance is a breeze with the quick-release filter for easy cleaning. Powered by a durable and quiet brushless motor, it's built to last. Features include convenient LED indication, energy efficiency at 1500W, and overheat protection for peace of mind. Each HD1 Hair Dryer comes with a diffuser, concentrator, and travel bag, ensuring you have everything you need for perfect hair, anywhere.





# HD1

**Model**      **EAN**  
AHD0001    5291485012946

- Fast drying: powerful airflow 100 km/h
- Safe for hair: intelligent thermo-control NTC sensor
- Reduces frizz & enhances shine: ionic technology
- Quick-change 360° magnetic nozzles
- Lightweight: 550 g
- Highly customizable: 9 use scenarios
- 3 heating modes & 3 speeds for each mode
- Versatile for different hair types
- Quick-release filter for easy cleaning
- Powerful brushless motor: durable and quiet
- Convenient LED indication
- Included: diffuser, concentrator, travel bag
- Energy efficient 1500 W
- Overheat protection

Fast drying: powerful  
airflow 100 km/h

Safe for hair: intelligent  
thermo-control NTC sensor

Reduces frizz & enhances  
shine: ionic technology

Quick-change 360°  
magnetic nozzles



# Intelligent thermo-control NTC sensor

Negative Temperature Coefficient is a temperature sensor whose resistance drops as the temperature rises.

How does an NTC thermo-sensor work? The sensor is located in the air stream of the hair dryer. As it gets hotter, the resistance of the sensor drops. The hair dryer reads the change in resistance and adjusts the temperature of the heating element. This keeps the airflow at the required safe temperature.





# Hair Dryer

## **AENO HD2**

Experience salon-quality styling with the AENO HD2 Hair Dryer. Featuring ionic technology, it reduces frizz and enhances shine, leaving your hair smooth and polished. Its foldable design and included travel bag make it perfect for on-the-go use.

Weighing only 600 grams, the AENO HD2 is lightweight and comfortable to use. With four customizable modes, it caters to all hair types and styling needs. Safety is ensured with built-in overheat protection.

Complete with a concentrator attachment for precise styling, the AENO HD2 Hair Dryer is the perfect blend of performance, convenience, and advanced technology for beautiful, healthy hair.



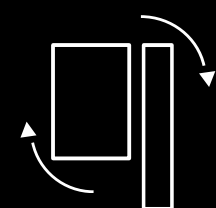




# HD2

Model	EAN
AHD0002	5291485013059

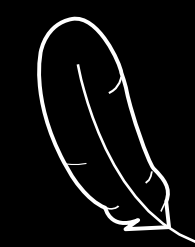
- Reduces frizz & enhances shine: ionic technology
- Foldable design, perfect for traveling
- Lightweight: 600 g
- Highly customizable: 4 modes
- Versatile for hair types
- Overheat protection
- Included: concentrator, travel bag



Foldable design,  
perfect for traveling



Reduces frizz & enhances  
shine: ionic technology



Lightweight:  
600 g



# Hair Dryer **AENO HD3**

AENO HD3 – Perfect Styling with Advanced Hair Care

Experience fast, professional-level styling with the AENO HD3 Hair Dryer – designed to dry, protect, and enhance your hair. Powered by DynamicHeat technology, it delivers airflow speeds up to 100 km/h for rapid drying, while the NTC sensor ensures intelligent temperature control to prevent heat damage and maintain healthy, shiny hair.

Tame frizz and boost shine with ionic technology, while the 5 magnetic nozzles, including a Coanda effect nozzle and diffuser, let you create any style with ease. Weighing just 570 g, the HD3 is lightweight and easy to handle, making it perfect for all hair types.

Customize your routine with 10 use scenarios and monitor settings on the LED display. A professional brushless motor ensures durability and quiet operation, while the energy-efficient 1500 W power guarantees outstanding performance.

Complete with a 2m cord, quick-release filter, and travel bag, the AENO HD3 delivers salon-quality results at home – effortlessly and safely.





# Hair Dryer **AENO HD3**



**Model**  
AHD0003

- DynamicHeat technology: perfect styling & healthy hair
- Fast drying: airflow up to 100 km/h
- Safe for hair: intelligent thermo-control NTC sensor
- Reduces frizz & enhances shine: ionic technology
- 5 magnetic nozzles icnluded
- Lightweight: 570 g
- Suitable for all hair types and hairstyles
- Highly customizable: 10 use scenarios
- Convenient LED display with temperature indication
- Quick-release filter for easy cleaning
- Professional brushless motor: durable & quiet
- Energy-efficient: 1500 W
- Smart temperature control
- Long cord: 2m
- Incnluded: Coanda effect nozzle, Concentrator, Styling Nozzle, Comb Attachment, Diffuser, Travel Bag

Fast drying: powerful  
airflow 100 km/h

Safe for hair: intelligent  
thermo-control NTC sensor

DynamicHeat technology:  
perfect styling & healthy hair

Reduces frizz & enhances  
shine: ionic technology



# Hair Dryer **AENO HD4**

AENO HD4 – Precision Styling with Hair Protection

The AENO HD4 Hair Dryer delivers powerful, salon-quality results with advanced care for your hair. With DynamicHeat technology and airflow speeds up to 100 km/h, it ensures fast drying while maintaining hair health. The intelligent NTC sensor controls temperature, preventing heat damage and keeping hair soft and shiny.

Frizz is minimized, and shine is enhanced through ionic technology, while the 360° magnetic nozzle allows for quick adjustments and easy styling. Lightweight at 570 g, the HD4 is comfortable to use for all hair types and features 10 customizable settings for versatile styling.

A professional brushless motor provides durability and quiet performance, while the 1500 W energy-efficient design ensures powerful results. The quick-release filter makes cleaning simple, and the 2m cord offers flexibility. Safety is prioritized with auto power-off overheat protection.

Complete with a magnetic concentrator and travel bag, the AENO HD4 is the ultimate tool for effortless styling and healthy, beautiful hair.





# Hair Dryer **AENO HD4**



**Model**  
AHD0004

- DynamicHeat technology: perfect styling & healthy hair
- Fast drying: airflow up to 100 km/h
- Safe for hair: intelligent thermo-control NTC sensor
- Reduces frizz & enhances shine: ionic technology
- Quick-change 360° magnetic nozzle
- Smart temperature control
- Lightweight: 570 g
- Versatile for different hair types
- Highly customizable: 10 use scenarios
- Quick-release filter for easy cleaning
- Professional brushless motor: durable & quiet
- Included: magnetic concentrator, travel bag
- Energy-efficient: 1500 W
- Overheat protection: auto power off
- Long cord: 2m
- Convenient display with temperature indication

Fast drying: powerful  
airflow 100 km/h

Safe for hair: intelligent  
thermo-control NTC sensor

DynamicHeat technology:  
perfect styling & healthy hair

Reduces frizz & enhances  
shine: ionic technology



# Hair Styler & Dryer **AENO HSI**

The AENO Hair Styler & Dryer HSI is a powerful, versatile styling tool designed to meet all your hair care needs in one device. With its unique twist mechanism, it transforms from a high-performance dryer to a professional-grade styler, providing flexibility for a wide range of hairstyles. Offering 13 customizable settings, the HSI is suitable for all hair types, from fine to thick, straight to curly, ensuring fast drying and precise styling every time.

The built-in ionization technology reduces frizz and enhances shine, leaving your hair smooth, glossy, and healthy-looking. The intelligent thermo-control system with an NTC sensor keeps the temperature in check, preventing overheating and protecting your hair from damage. Equipped with a quiet, powerful brushless motor, the HSI delivers efficient drying while maintaining a low noise level for a peaceful styling experience.

Lightweight at just 440g, the HSI is comfortable to use for long periods, and its quick-release magnetic filter makes cleaning a breeze. With 7 interchangeable nozzles including volumizing, smoothing, curling, and styling concentrators this styler gives you the versatility to create everything from sleek, straight looks to voluminous curls. The included travel bag ensures easy storage and portability, making it perfect for both home use and on-the-go styling.





# Hair Styler & Dryer **AENO HSI**



**Model**      **EAN**  
AHS0001      5291485013417

From Dryer to Styler in a twist  
Versatile: all hair types & hairstyles  
Fast drying: powerful airflow  
Safe for hair: intelligent thermo-control NTC sensor  
Highly customizable: 13 use scenarios  
Ionization: Reduces frizz & enhances shine  
Durable & Powerful: professional brushless motor  
Quiet: Noise-optimized engine  
Easy to store: Travel bag included  
Lightweight: 440g is perfect for long term use  
Easy to clean: Quick-release magnetic filter  
Versatile: set of nozzles for all hairstyles  
7 nozzles included: Volumizing, Firm Smoothing and Soft Smoothing  
Brushes, 2 Curling Barrels, Pre-styling Dryer, Styling Concentrator  
Travel bag included

From Dryer to Styler in  
a twist

Fast drying: powerful  
airflow

Versatile: all hair types &  
hairstyles

Safe for hair: intelligent thermo-  
control NTC sensor



# Versatile: all hair types & hairstyles

**Volumizing Brush:** designed to add volume and body to your hair, perfect for creating fuller, bouncier styles.

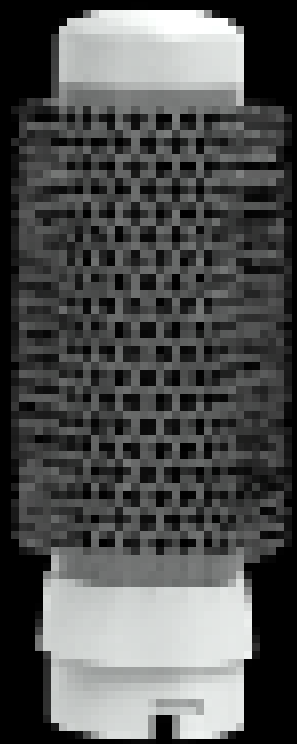
**Curling Barrel** (2 pcs with different direction): ideal for creating various curl styles, from loose waves to defined curls.

**Firm Smoothing Brush:** designed to control and smooth out thicker or coarse hair, providing a sleek, polished finish.

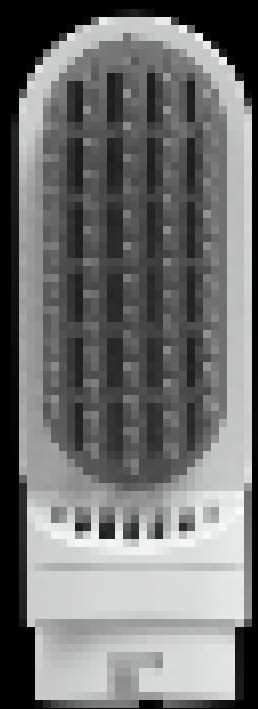
**Soft Smoothing Brush:** perfect for finer hair types, offering a gentle touch to reduce frizz and create a smooth, shiny finish.

**Pre-styling Dryer:** for quickly drying hair to a manageable level, preparing it for the next stage of styling.

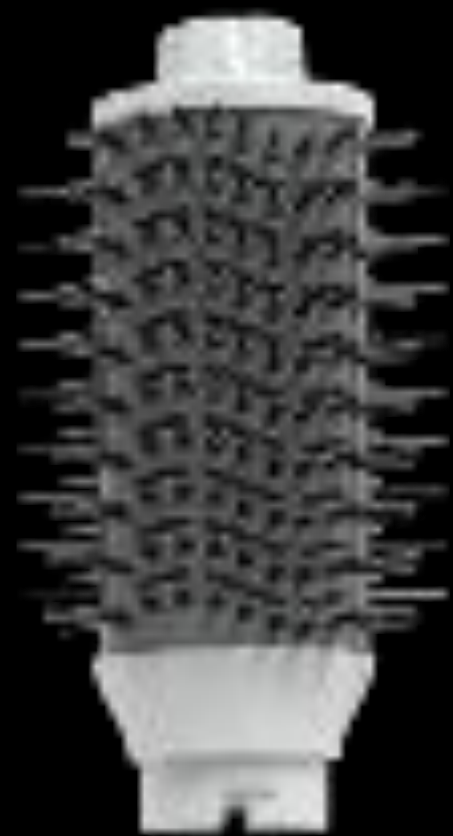
**Styling Concentrator:** directs focused airflow for precise styling, perfect for straightening or defining sections of hair.



volumizing  
brush



firm smoothing  
brush



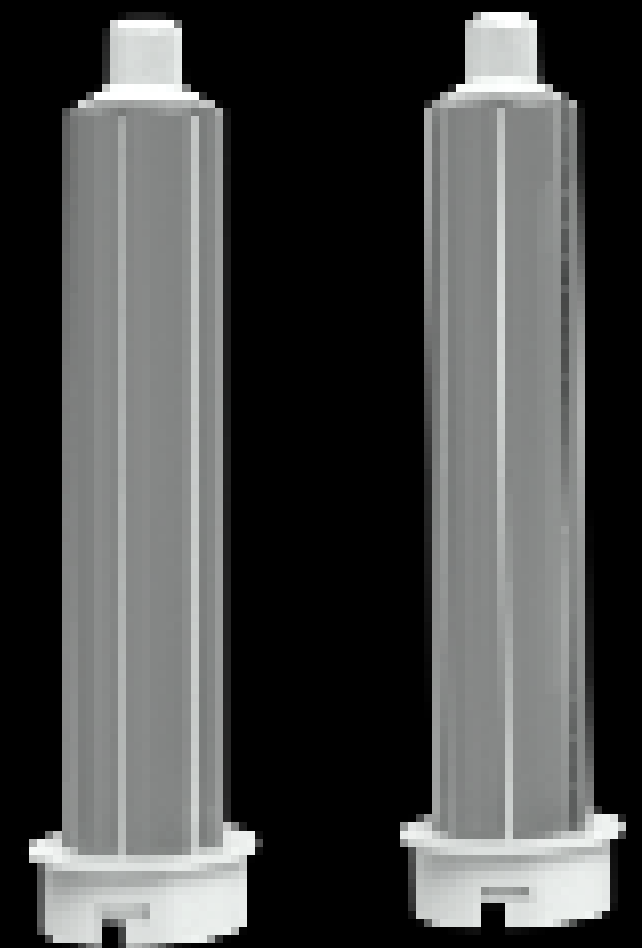
soft volumizing  
brush



pre-styling  
dryer



styling  
concentrator



2 curling barrels



# AENO Hair Dryer & Styler product range



HD1



HD2



HD3



HD4



AI ProDryer



HS1

AI mode					+	
Voice control					+	
Auto start-stop technology					+	
InfraCare technology					+	
Dryer & Styler 2-in-1						+
Heating modes	3	2	5	5	7	4
Speeds	3	3	2	2	2	3
Max air flow speed, km/h	95	40	95	95	80	58
Power, W	1500	1700-2000	1500	1500	1500	1200
Min noise level	up to <b>70 dB</b>	up to <b>67 dB</b>	up to <b>68 dB</b>	up to <b>68 dB</b>	up to <b>63 dB</b>	up to <b>78 dB</b>
NTC sensor	+	-	+	+	+	+
Ionization	+	+	+	+	+	+
Weight, kg	<b>0.55</b>	<b>0.6</b>	<b>0.57</b>	<b>0.57</b>	<b>0.63</b>	<b>0.44</b>
Included	Magnetic concentrator nozzle, magnetic diffuser, travel bag	Concentrator nozzle, travel bag	Coanda effect nozzle, Concentrator, Styling Nozzle, Comb Attachment, Diffuser, Travel Bag	Magnetic concentrator, travel bag	Styling nozzle, Quick dry nozzle, Coanda effect attachment, Diffuser, Brush attachment, Travel case	Volumizing, Firm Smoothing and Soft Smoothing Brushes, 2 Curling Barrels, Pre-styling Dryer, Styling Concentrator, Bag



A E N O | Creating the future